



# Public Works Department

Rhon Herndon

Jerry Dankbar

Jason Shykowski

Mike Dour

# Public Works

---

## Services:

- PW Administration
- CIPs:
  - Roadways, bike trails, transit, bike/ped bridges, city buildings
- Traffic Operations
- Floodplain Management
- Roadway Maintenance
- Drainage Systems Maintenance



# Public Works

---

## Services:

- Traffic Signs & Pavement Markings
- Traffic Signal Maintenance
- Street Sweeping
- Fall Leaf Pickup
- Roseville Transit
- TSM Program
- Safe Routes to School
- Regional Project Coordination

# Public Works Admin

---

	<u>% GF</u>
▪ Departmental Oversight	100%
▪ Budget	100%
▪ Council	100%
▪ Regional Partners	100%
▪ Presentations	100%

# Public Works Engineering

---

	<u>% GF</u>
▪ Roadway CIPs	25%
▪ City Building CIPs	25%
▪ Traffic Operations	95%
▪ Traffic Signal Maintenance	0%
▪ Floodplain Management	99%



Woodcreek Oaks Widening



Roller Compacted Concrete



Oak Street Parking Garage



Fire Station #1

# Capital Improvement Projects – 25% GF



Traffic Management – 100% GF

City of Roseville Traffic - Windows Internet Explorer

http://traffic.roseville.ca.us/roseville/

City of Roseville Traffic

## Traveler Information

Roseville Home | Full Extent | Links | Reports | Feedback |

Legend

- Camera
- Incident
- CMS Sign
- Congestion
  - Light
  - Medium
  - Heavy

**CMS - Message Sign**  
 DOWNTOWN - TUESDAY - NIGHTS  
 VERNON STREET - CLOSED  
 TUESDAY - 3:00 - 10:00 PM

Last Update: 7/6/2010 2:14:45 PM PST

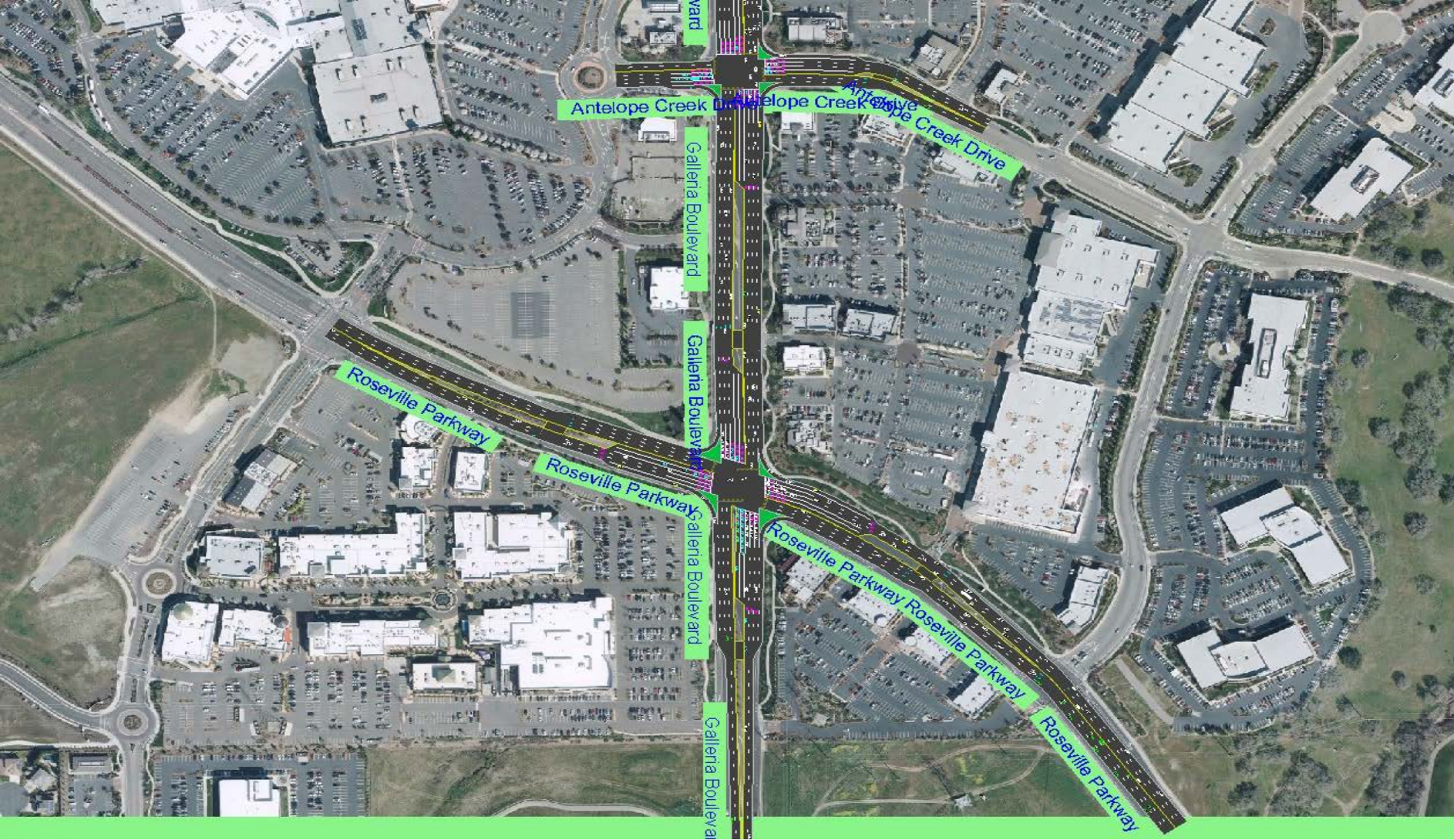
638 Visits

Page best viewed with Windows Internet Explorer.

Adobe Reader is required to print reports.

Powered by Naztec, Inc.

Traveler Information Webpage – 100% GF



## Traffic Signal Timing – 0% GF

# Additional Traffic Engineering

	<u>% GF</u>
▪ Traffic Study Requests	100%
▪ Safe Routes To School	0%
▪ Crossing Guard Program	88%
▪ Plan Check Signals/Striping	0%
▪ Traffic Control Plans	99%

# Traffic Signal Maintenance

---

	<u>% GF</u>
• 180 traffic signals	0%
• Fiber optic network	0%
• Respond to malfunctions	0%
• Repair knockdowns	0%
• Signal inspection	0%



## Floodplain Management – 100% GF

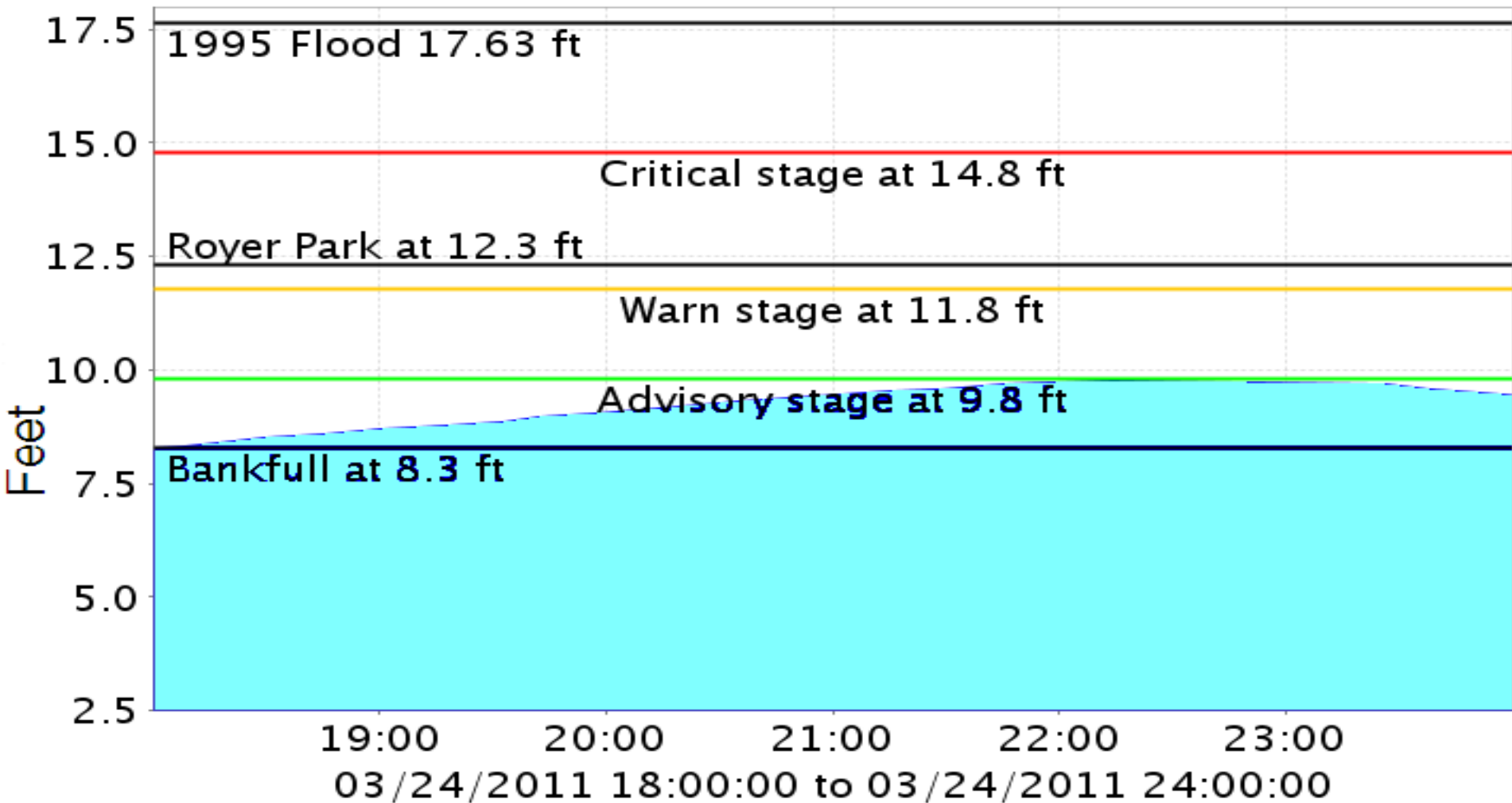


## Flood Control Improvements



Flood Alert System – 100% GF

# Dry Creek at Royer Park



Flood Alert System – 100% GF

**CITY OF ROSEVILLE  
FLOOD ALERT SYSTEM**

SUTTER COUNTY

ELDORADO COUNTY

PLACER COUNTY

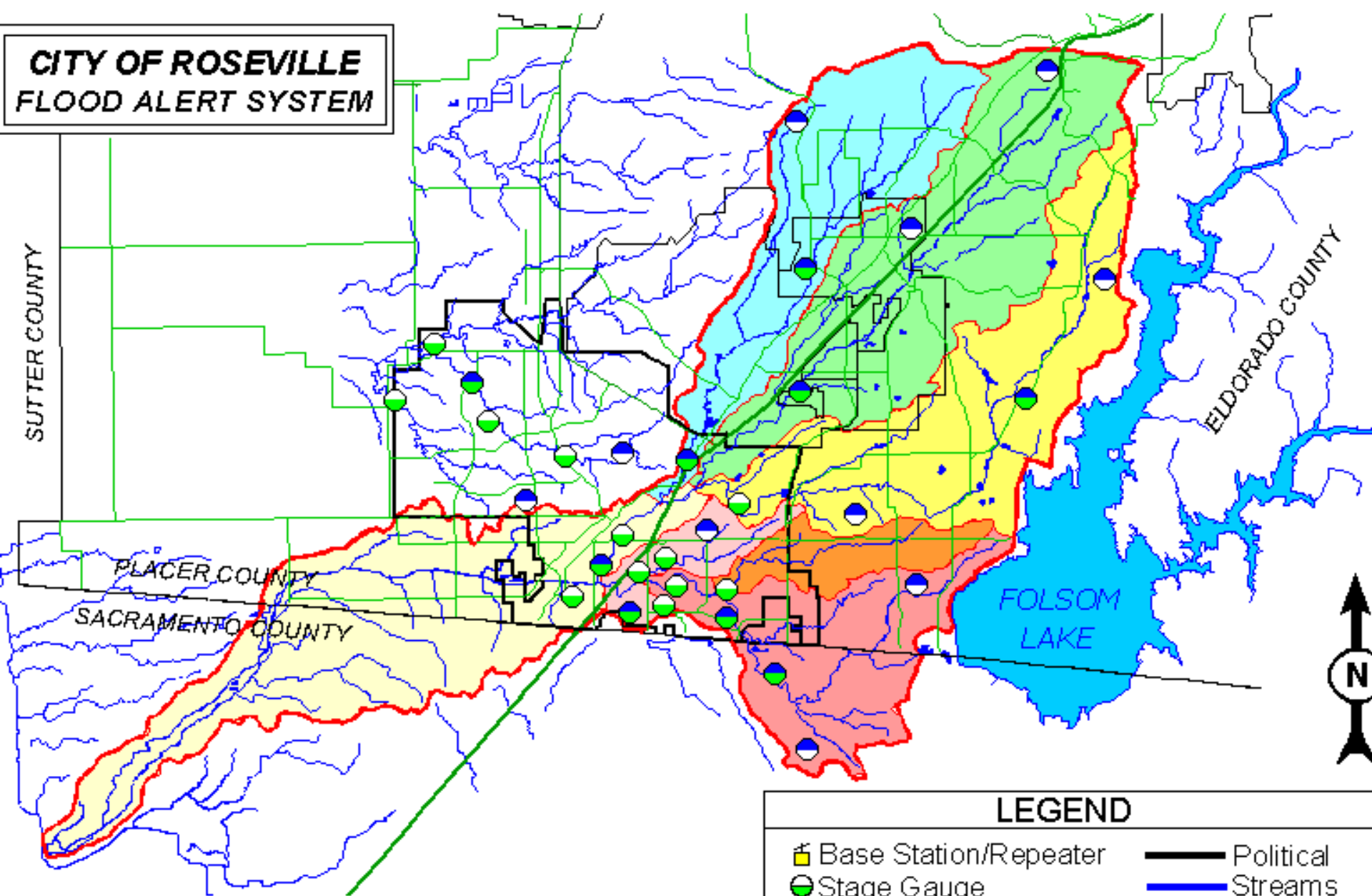
SACRAMENTO COUNTY

FOLSOM LAKE



**LEGEND**

- |                       |           |
|-----------------------|-----------|
| Base Station/Repeater | Political |
| Stage Gauge           | Streams   |
| Precip. Gauge         | Watershed |
| Precip./Stage Gauge   | Roads     |



# **FEMA's CRS Program – 100% GF**

---

- Roseville has a Class 1 rating
- Only agency in the entire US
- 45% discount on flood insurance premiums

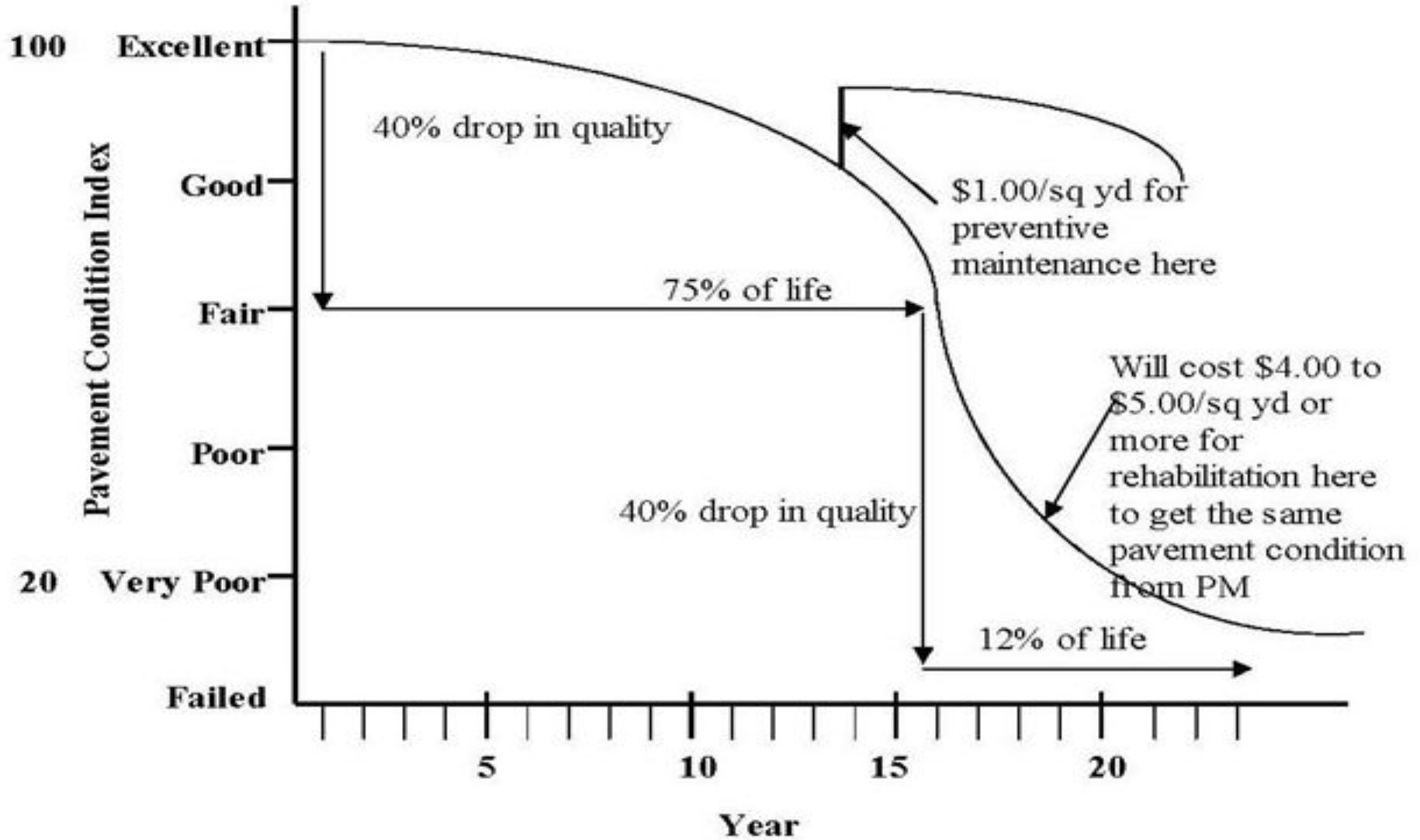


# Public Works Street Maintenance

---

## General Fund Programs

Street/Pavement Maintenance	100%	Street Sweeping	0%
Weed Abatement	100%	Transportation Permits	0%
Sidewalk Maintenance	100%	Special Events	90%
Traffic Signs	100%	Graffiti Removal	100%
Roadway striping/markings	100%	Assist Fire/PD	100%
Drainage System	100%	On-Call 24/7	100%

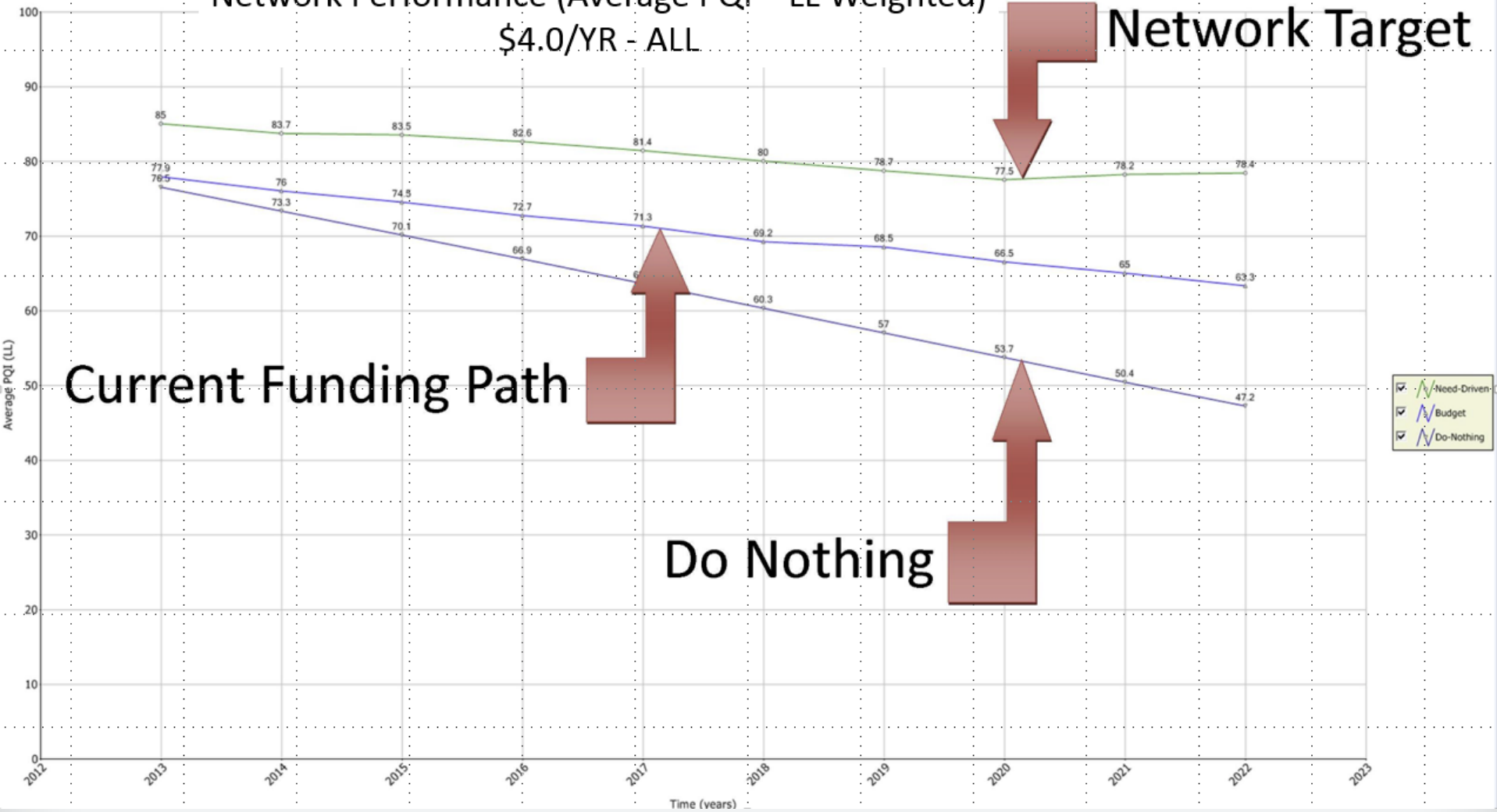


## Preservation of pavement

# Network Performance (Average PQI – LL Weighted)

\$4.0/YR - ALL

## Network Target

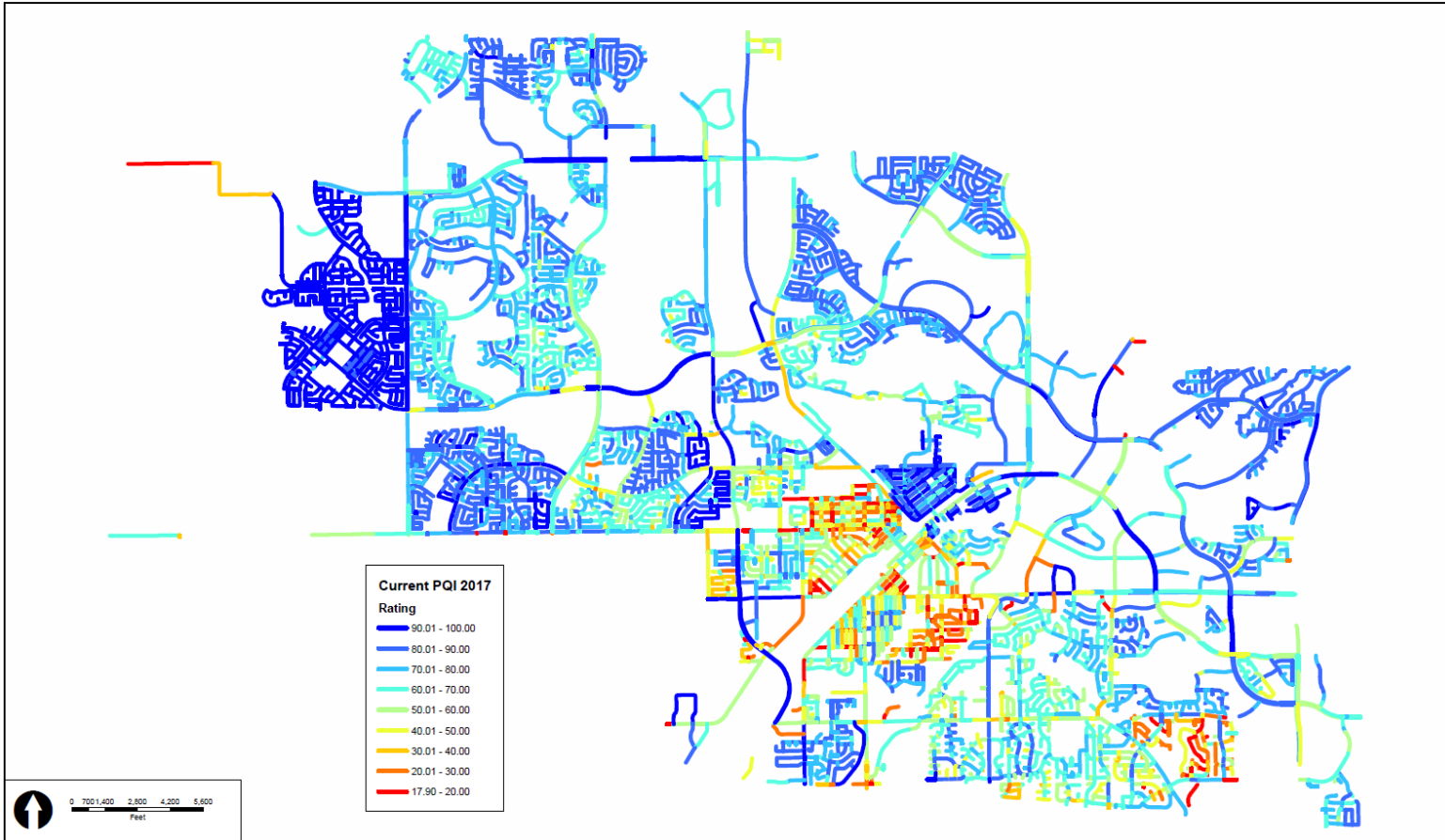


### Current Funding Path

### Do Nothing

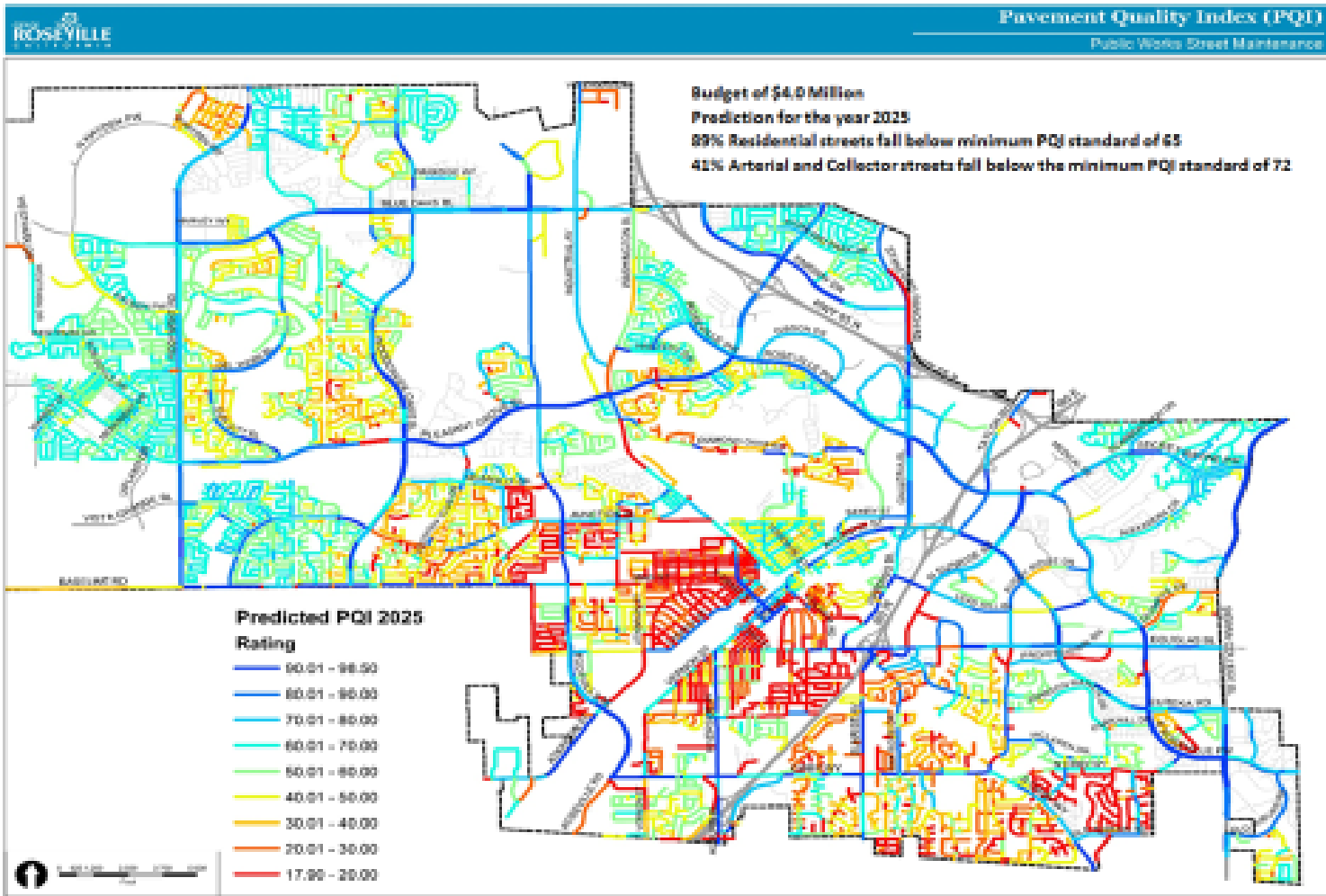
# Pavement Preservation Cost Analysis

# 2017 Current PQI Rating



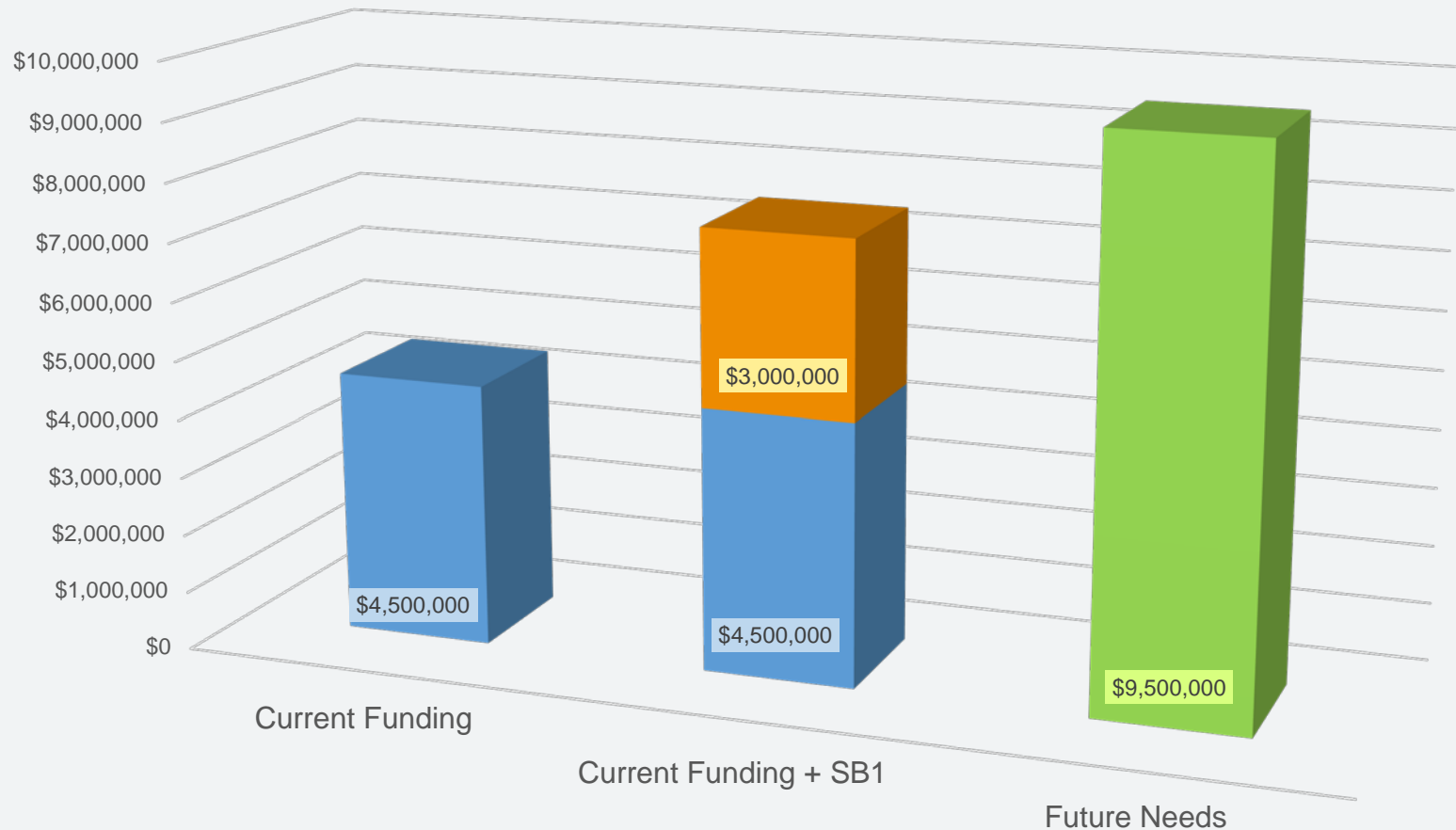
Picture of current PQI ratings

# 2025 Projected PQI Rating



Picture of predicted PQI ratings with current funding levels

# Street Resurfacing Funding



Maintenance of roadway infrastructure will continue to be a challenge despite approval of Senate Bill 1

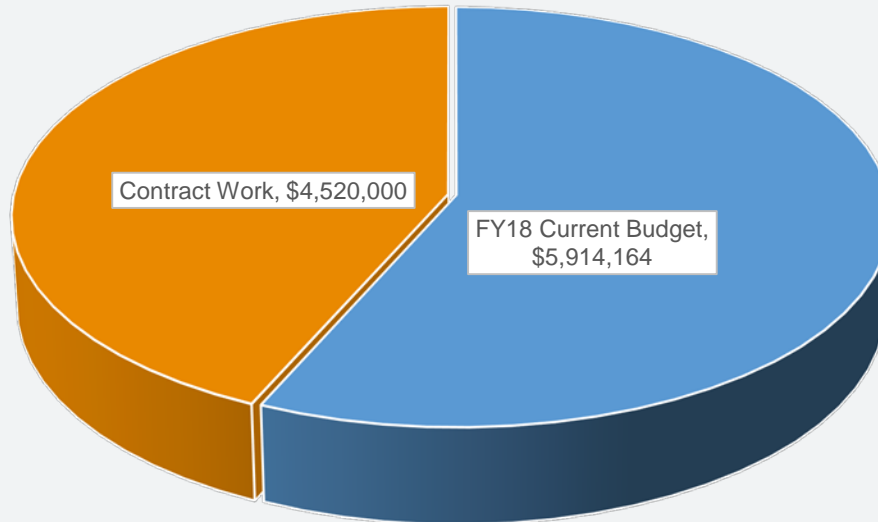
PQI levels will continue to decline

# Street Maintenance Operating Budget

Total Street Maintenance Budget = \$10.43m

## Contract Work:

Resurfacing Work \$4.5m  
Guardrail & Fence Repair  
\$15,000  
Mowing \$5,000  
Street Markings \$5,000



- FY18 Current Budget
- Contract Work



## Programs & Goals:

Apply a maintenance or rehabilitation process to the roadway system on a 7 - 10 year rotation that is cost effective and governed by available funds and priorities

Paving crew



## Programs & Goals:

- Sweep all residential streets at least once per month
- Sweep all major and commercial streets at least twice per month



Sweeping is performed not only to make our streets look clean, but also to remove pollutants and organic materials before they enter into the storm drain system, which flows directly to our streams

## Street Sweeping

## Program & Goals:

Our Leaf Pickup crews work on a continuous rotation 12 weeks out of the year (November – January) to keep our creeks, streams, streets, and underground storm water drains from clogging with fallen leaves and other debris that flow down our gutters during winter rains

Our dual approach offers:

- Bagged Leaf Pickup
- Un-bagged Leaf Pickup (in more densely tree-populated areas)



## Fall Leaf Pickup Program

## Programs & Goals:

- Maintain the drainage facilities, structures, curbs and gutters in better than, or as close to, original construction or standards
- Inspect/clean assets every 2 years to ensure the drainage system flows at optimal capacity
- Remove & repair misaligned or damaged curbs/gutters/drains



Drainage crew

All signs, legends and striping are maintained to current State and Federal standards which include strict guidelines to keep traffic markings in good repair as to placement, uniformity of markings and reflectivity levels.



Signs & Markings crew

The City of Roseville Sign Shop fabricates most of our city's signs for an efficient and cost effective result:



Layout design



Electronically cuttable material is cut out



Apply material to aluminum sign backing

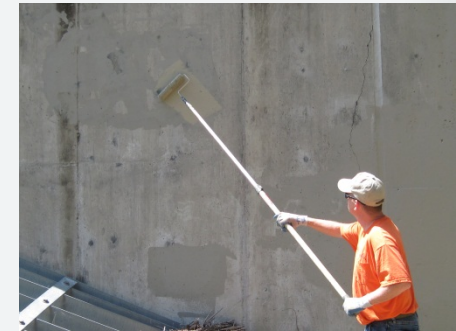


Install

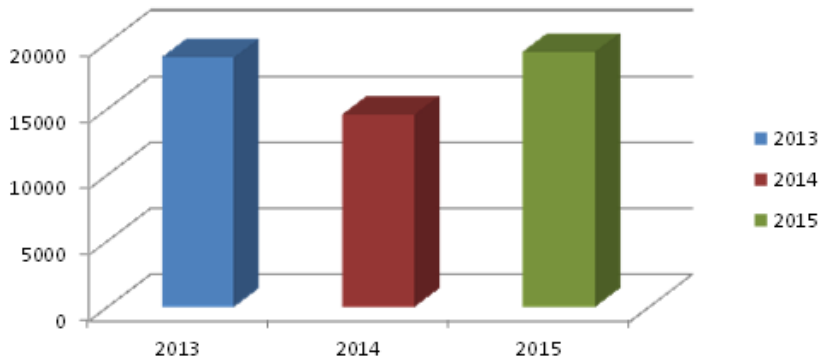
Sign Shop

# Programs & Goals:

Abate within 48 hours of RPD processing - pavement, sidewalks, bridges, signs, bike trails, signal assets, railings, & also emergency removal



Graffiti SqFt Abated



## Graffiti Abatement

## Programs & Goals:

Weed removal performed 4 months of the year for sight obstruction, asset inspection, fire safety & aesthetics.



## Weed Abatement

# Street Maintenance Crews

perform road & bike trail closures, traffic control, and street sweeping for City and privately sponsored special events year round



## Special Events

**Street Maintenance Crews** respond 24/7 for emergency call-outs by Roseville Fire and Police. We assist with vehicle accidents, traffic control, road closures, and HAZMAT disposal.



Emergency Response

# Public Works Alternative Transp.

- Public Transit System
- Transportation Systems Management (TSM)
- Bicycle & Pedestrian Master Plan Implementation



- **Local**



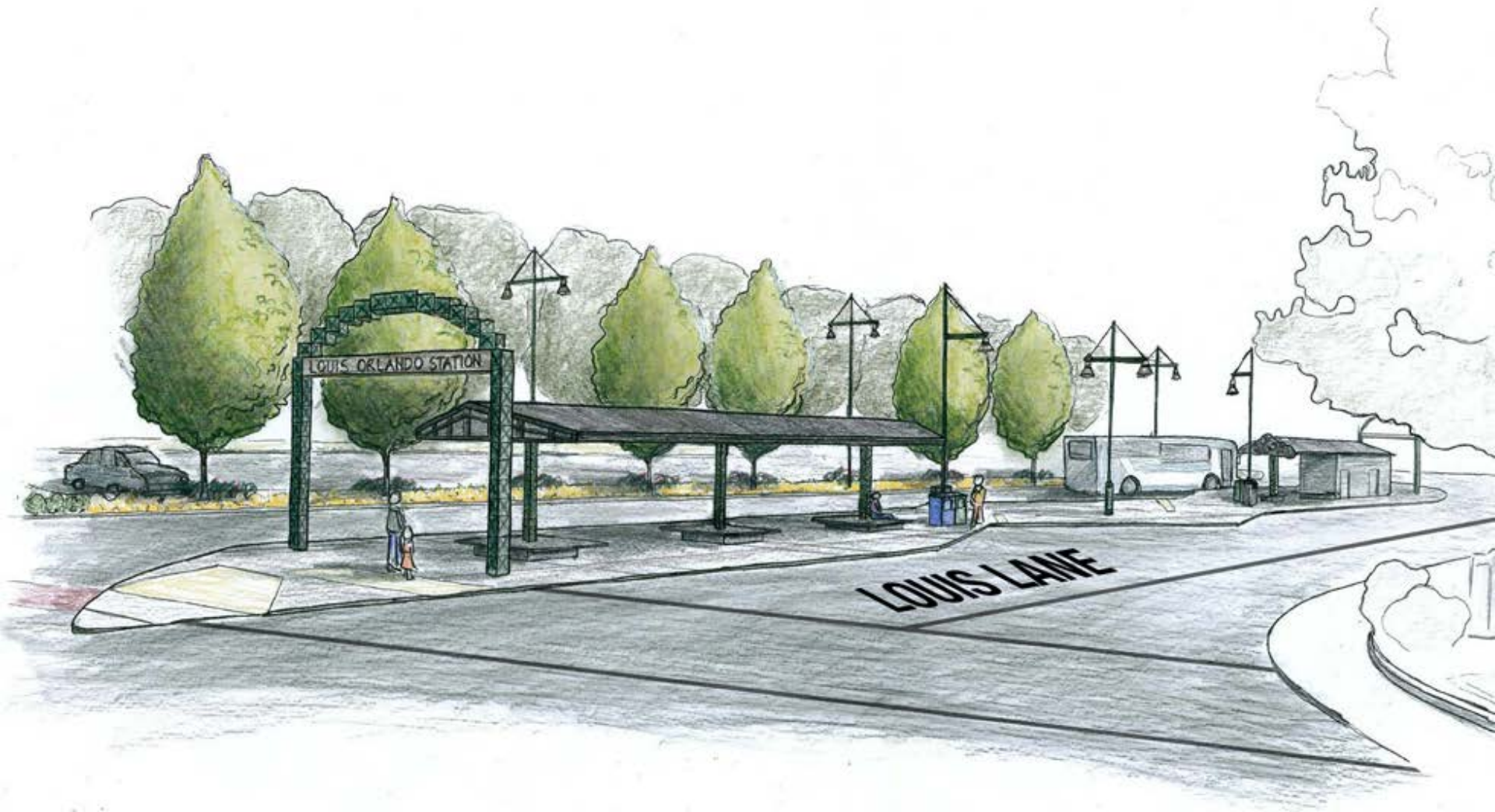
- **Paratransit**
- **Dial-a-Ride**



- **Commuter**
- **Game Day Express**



# Roseville Transit



# Louis/Orlando Transit Center

## TSM Goals:

- Improve air quality and traffic congestion
- Achieve 20% peak hour trips by alternative mode
- Sites with 50+ employees actively participate



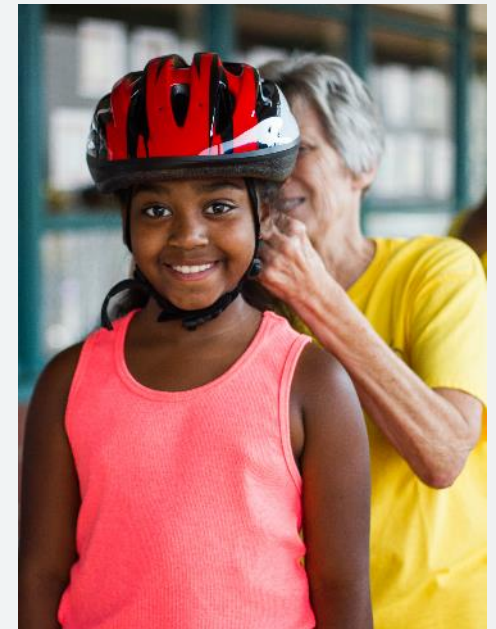
# Transportation Systems Management

- 34 miles of off-street bike trails
- 90 miles on-street bike lanes

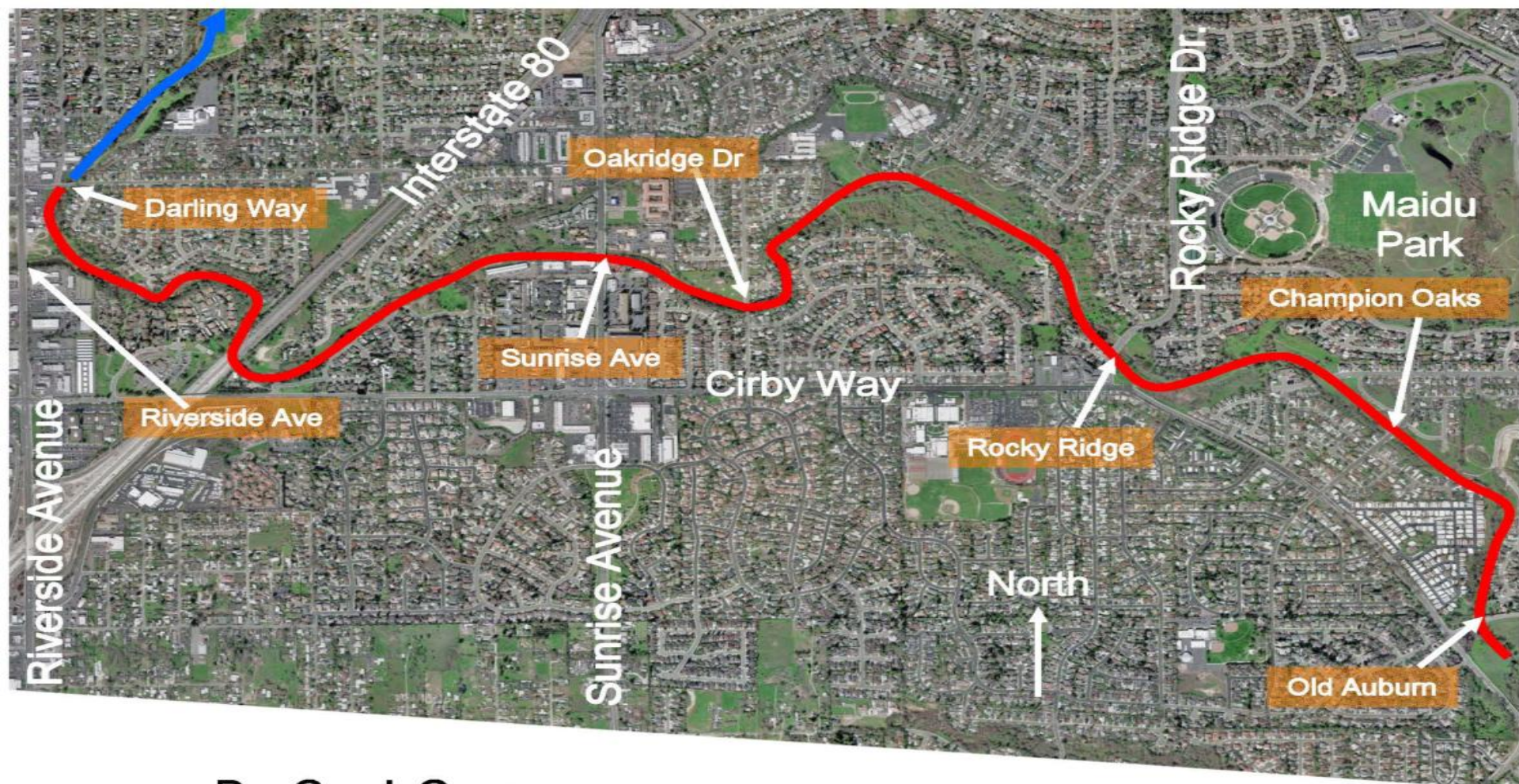


## Bikeways

- Roseville Bikefest
- Helmet Safety and Fitting
- Bike/Walk Ambassadors
- Bike Safety Clinics

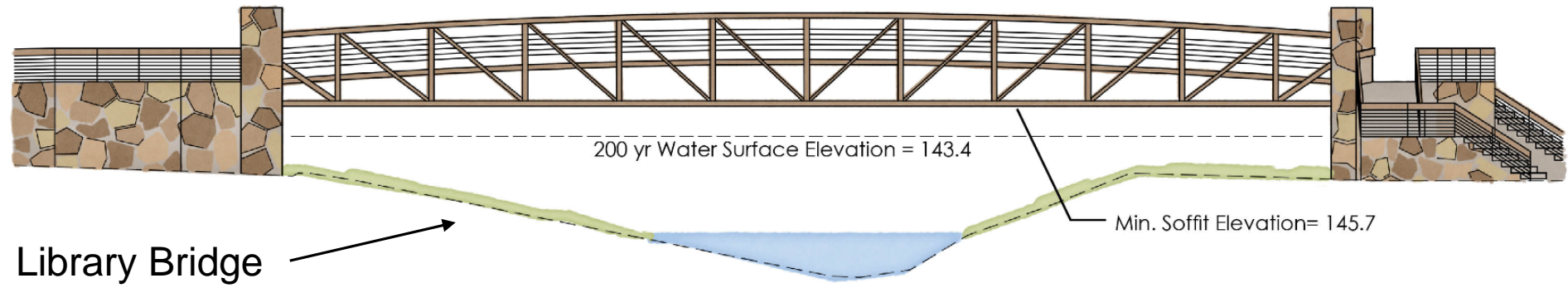


## Bicycle Safety Education and Outreach



 Dry Creek Greenway Trail Project

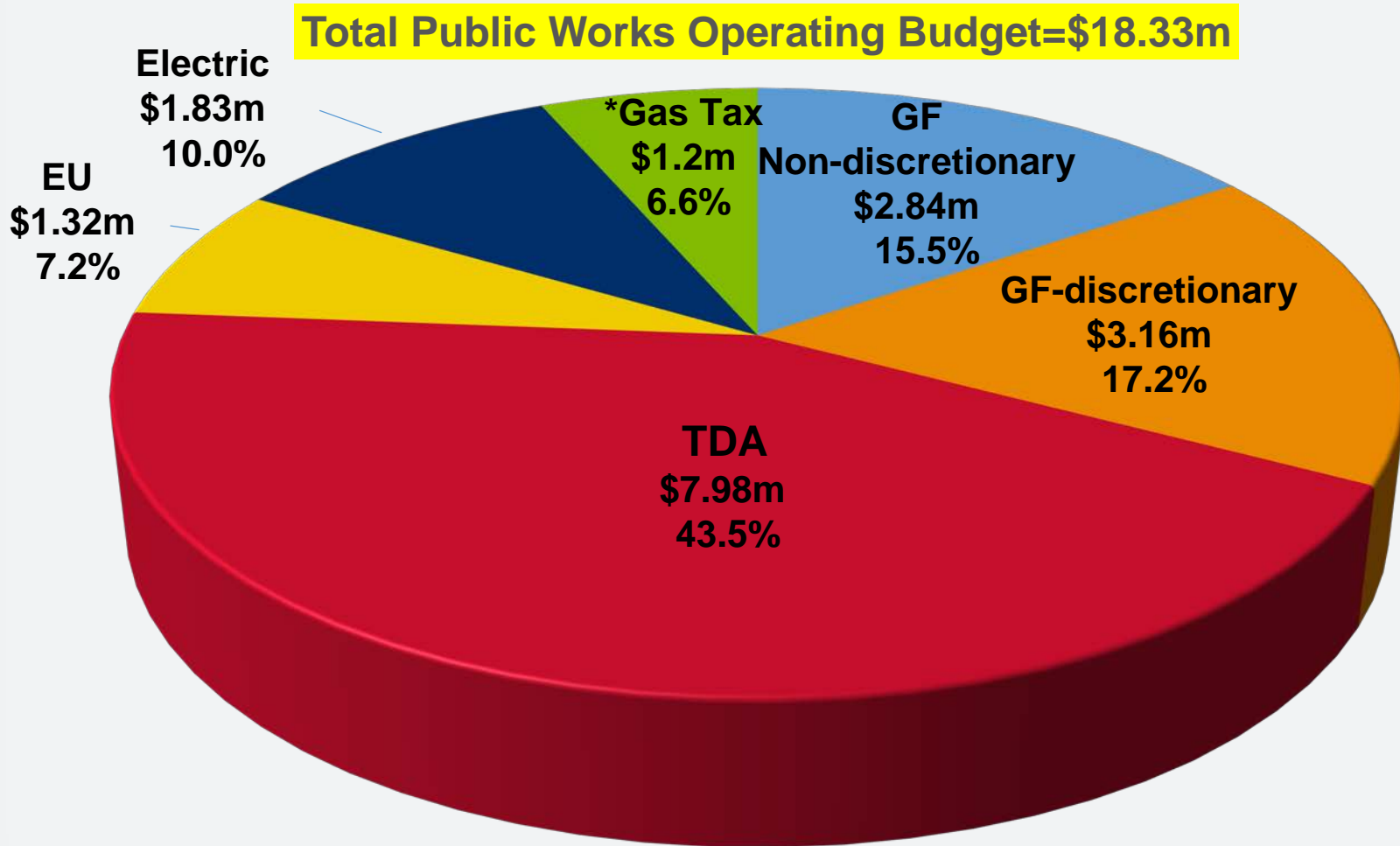
# Dry Creek Greenway Trail



Ice House Bridge

# Downtown Bridges and Trail Project

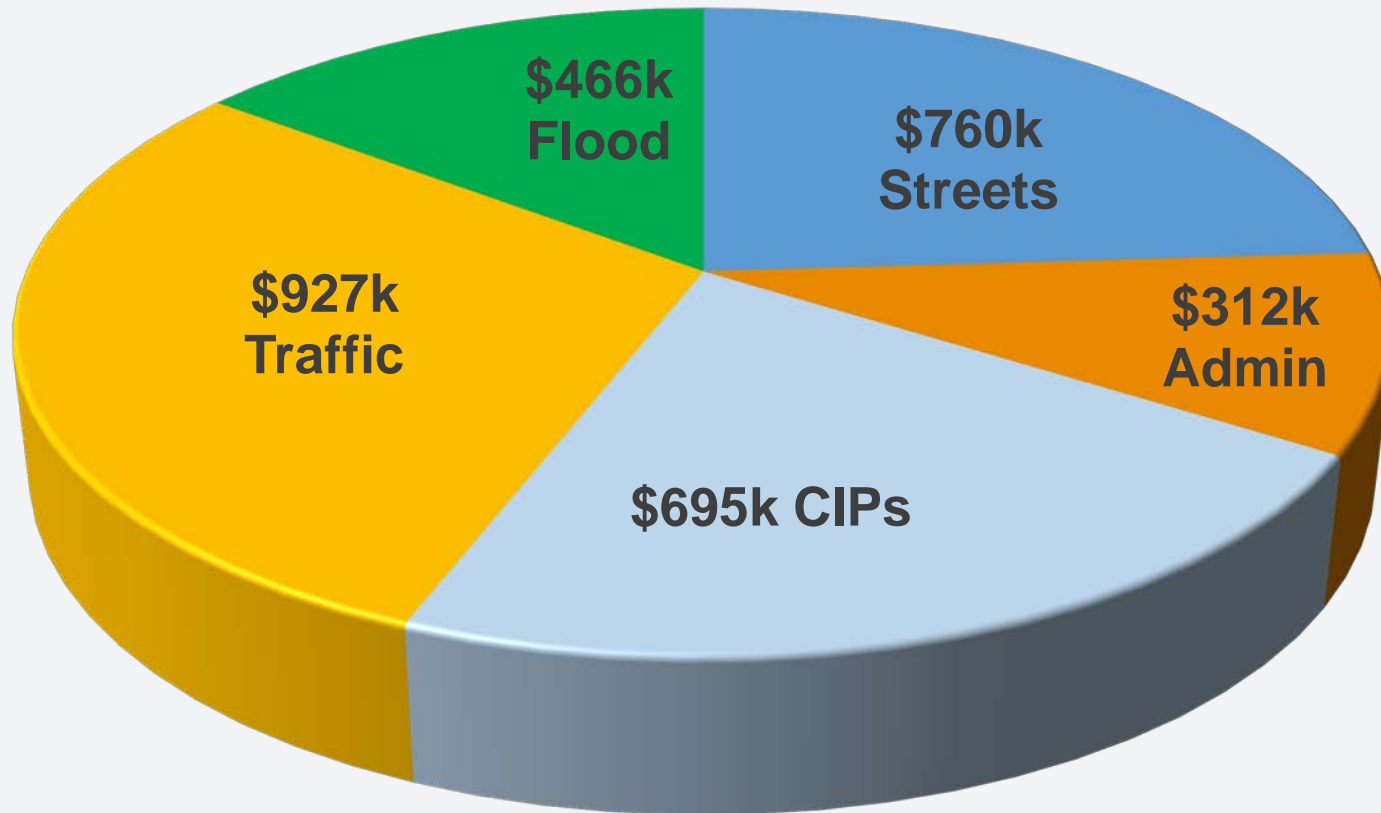
# Public Works Operating Budget



\*Average combined Gas Tax and UIR Funds Available per Year is \$4.2 million

# PW GF Discretionary \$3.16m

---



# \$312k PW Administration

---

## Services:

- Departmental Oversight
- Budget
- Council
- Regional Partners/Project Coordination
- Presentations

# \$695k CIP Management

---

## Services:

- Capital Improvement Project Management
- General Questions from the Public
- Public Records Requests
- Sidewalk Complaints
- Soundwall/Fence Issues
- Street Drainage Issues

# \$927k Traffic Management

---

## Services:

- Intelligent Transportation System (ITS)
- Traffic Incident Management
- Traffic Studies
- Speed Surveys
- Traffic Control Plan Review
- Special Event Traffic Control Plan Implementation
- Crossing Guard Program

# **\$466k Floodplain Management**

---

## **Services:**

- Flood Alert System
- Community Rating System (CRS)
- Floodplain Management

# \$760k Street Maintenance

---

## Services:

- Maintain underground drainage repair/replacement
- Drainage outfall inspection/cleaning
- Clean creeks & ditches
- Drainage pump station and flood wall maintenance
- Pavement management/resurfacing program
- Asphalt remove/replace, patching & crack sealing
- Sidewalk repair & trip hazard removal
- Litter removal from ROW
- Fall leaf pickup program



# \$760k Street Maintenance

---

## Services:

- Sign and post inspection/replacement
- Street markings inspection/replacement
- Special events traffic control
- Weed abatement program
- Emergency support for Fire/Police
- Graffiti abatement



# Discussion